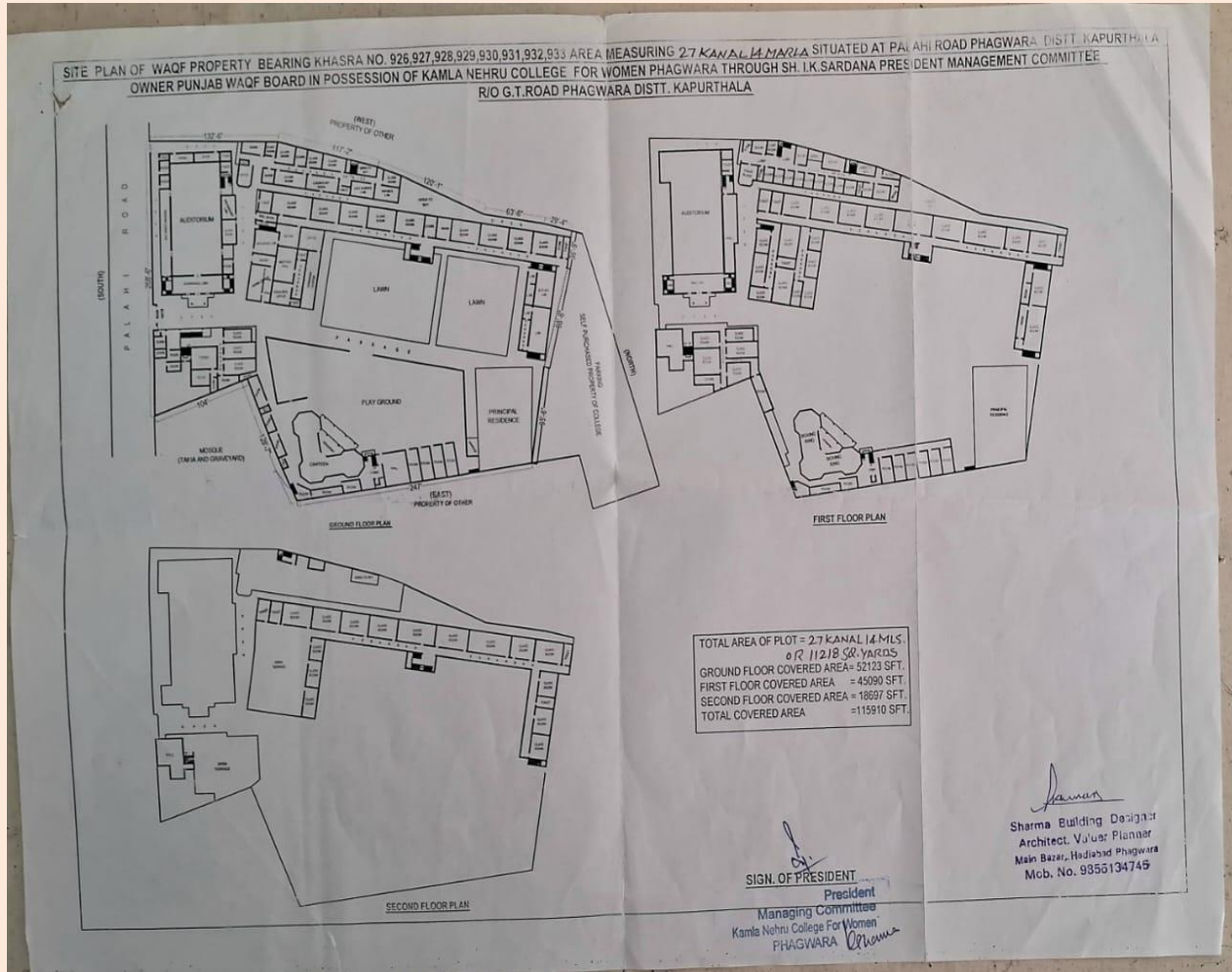
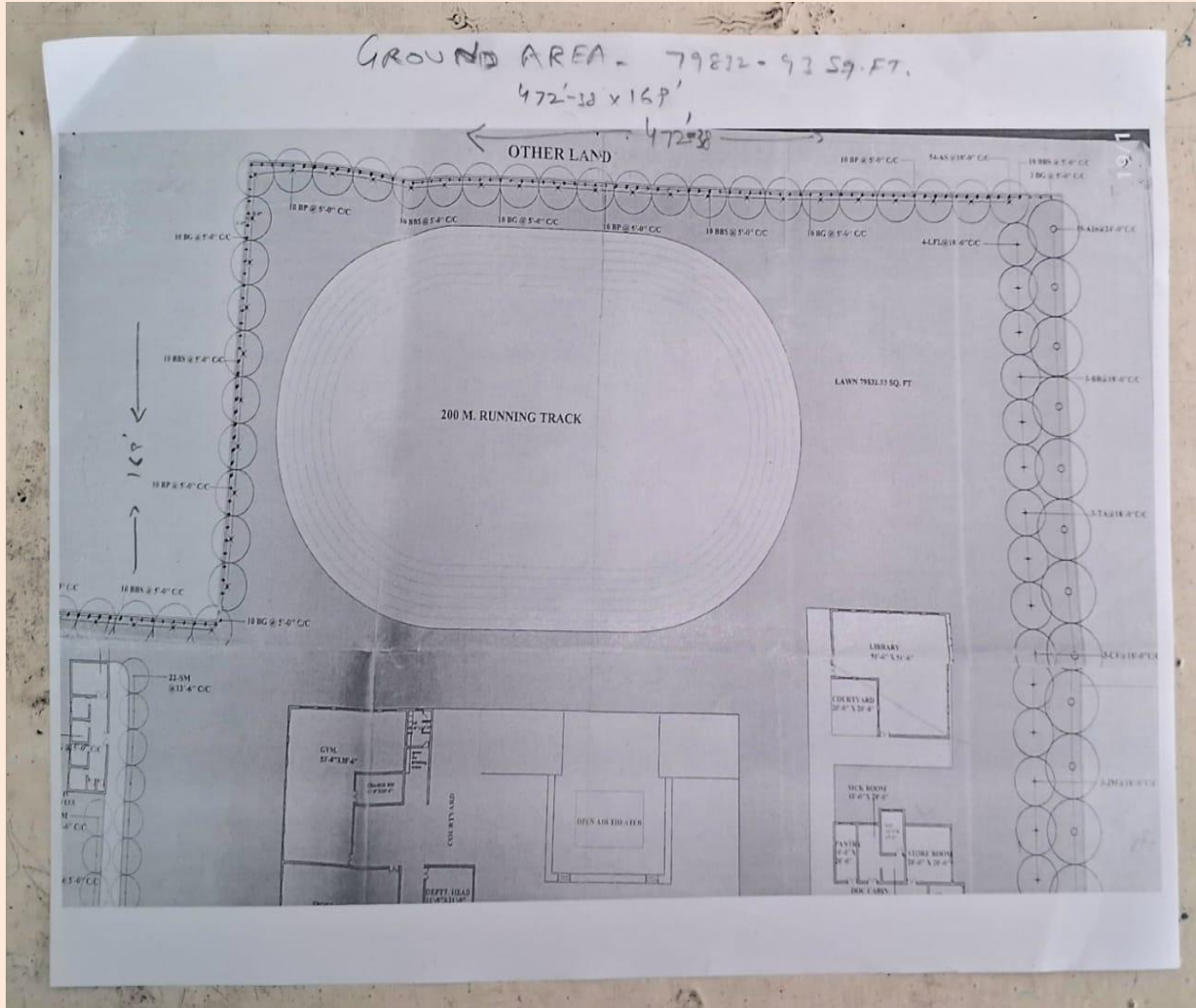


4.1.1 The Institution has adequate infrastructure and physical facilities for teaching-learning. viz., classrooms, laboratories, computing equipment etc.

College Map




College Stadium



SH. B.K. SARDANA MEMORIAL AUDITORIUM



Phagwara, Punjab, India
Kamla Nehru college for women, Phagwara
Lat 31.227506°
Long 75.766734°
30/12/23 11:49 AM GMT +05:30

 GPS Map Camera

Principal Room



Administrative Block



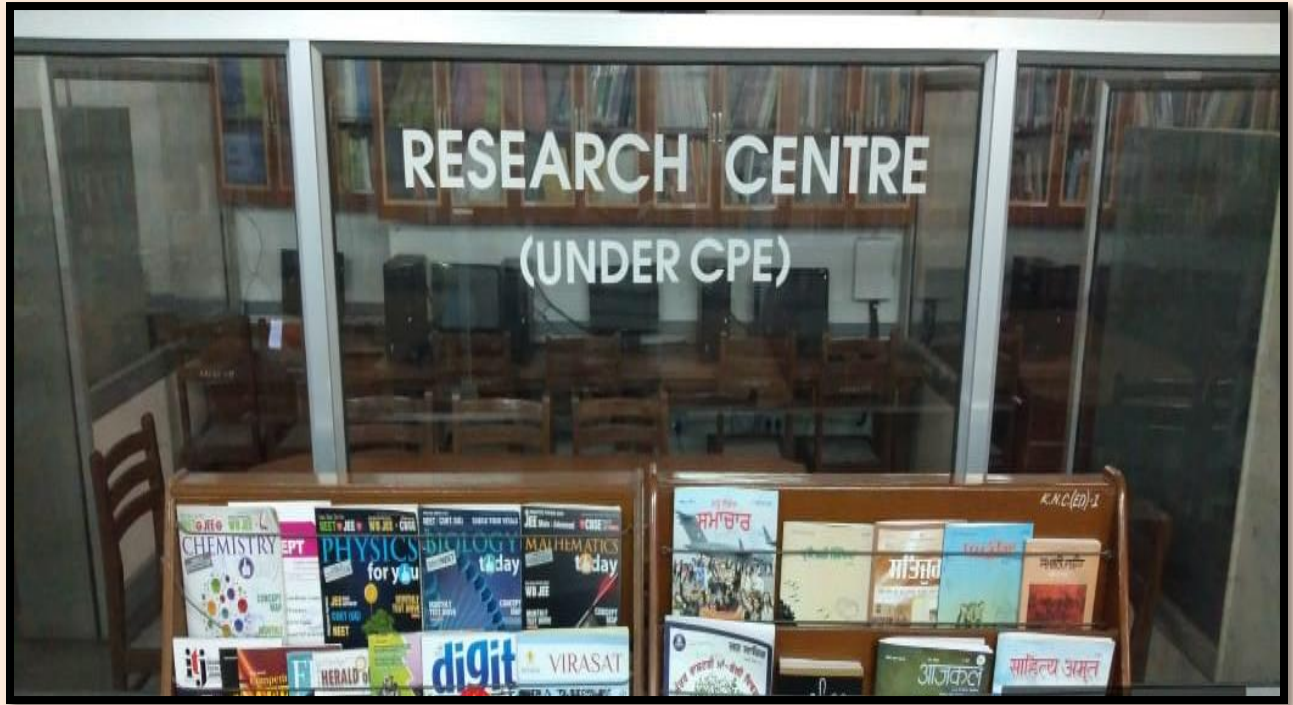
SHRI BHAG RAM HANDA LIBRARY



LIBRARY BOOKS



RESEARCH CENTRE IN LIBRARY (UNDER CPE)



FIRE HOSE REEL



FIRE EXTINGUISHER



LIBRARY RULES

**KAMLA NEHRU COLLEGE FOR WOMEN
PHAGWARA
Sh. Bhag Ram Handa Library**

LIBRARY RULES

1. MEMBERS/READERS/USERS of the library
I. Staff members
II. All the bonafide students of this college.
2. Membership of the students will remain valid till the student remain on roll in the college.
3. User should carry the library identity card and show it to the library staff on demand.
4. The Readers shall maintain silence in the library.
5. Timing for issue/return of books is 9.00 A.M to 3.30 P.M.
6. Purse, Polybags, Personal Books are not allowed in the library.
7. UnderGraduate students can draw two books while Post Graduates students can draw four books from the library.
8. Users will have to replace the books or pay three times of its price if the books are lost or found damaged.
9. Reference Books, Rare Books, unbound periodicals will not be issued.
10. If a volume of series is mutilated or lost and a new volume is not separately available, the borrower shall be liable to replace the whole set series.
11. Marking of attendance in the library register is mandatory for all the members/students who visit the library.
12. The librarian may recall any book, if necessary even before its due date.
13. Before leaving the library, the student is required to keep the books/periodicals etc, borrowed from the library, back at its place.
14. A clearance certificate will be issued only to those readers who had returned all the books issued to them.
15. A fine of Rupee 1 per day will be levied on the member of library, if a book is kept after the due date stamped on it.
16. The counter assistant is authorised to search the reader if they are carrying any reading material or any other item from the library.
17. If any student has any complaint about the service of the library, they are advised to bring it to the notice of the librarian.

NOTE:- ALL THE USERS OF THE LIBRARY ARE REQUESTED TO OBSERVE THE RULES MENTIONED ABOVE.

WATER SPRINKLERS IN LIBRARY



Under CPE Scheme
AUDIO-VISUAL LAB
A temporal and spatial platform for
faculty enrichment programmes &
Intellectual enhancement of its young learners



FASHION DESIGNING & HOME SCIENCE BLOCK



FASHION DESIGNING LAB



HOME SCIENCE LAB



WOMEN CELL



Nanny Care & Nutrition Lab



STRESS MANAGEMENT LAB



NSS





Staff Room



NCC



FIRST AID ROOM



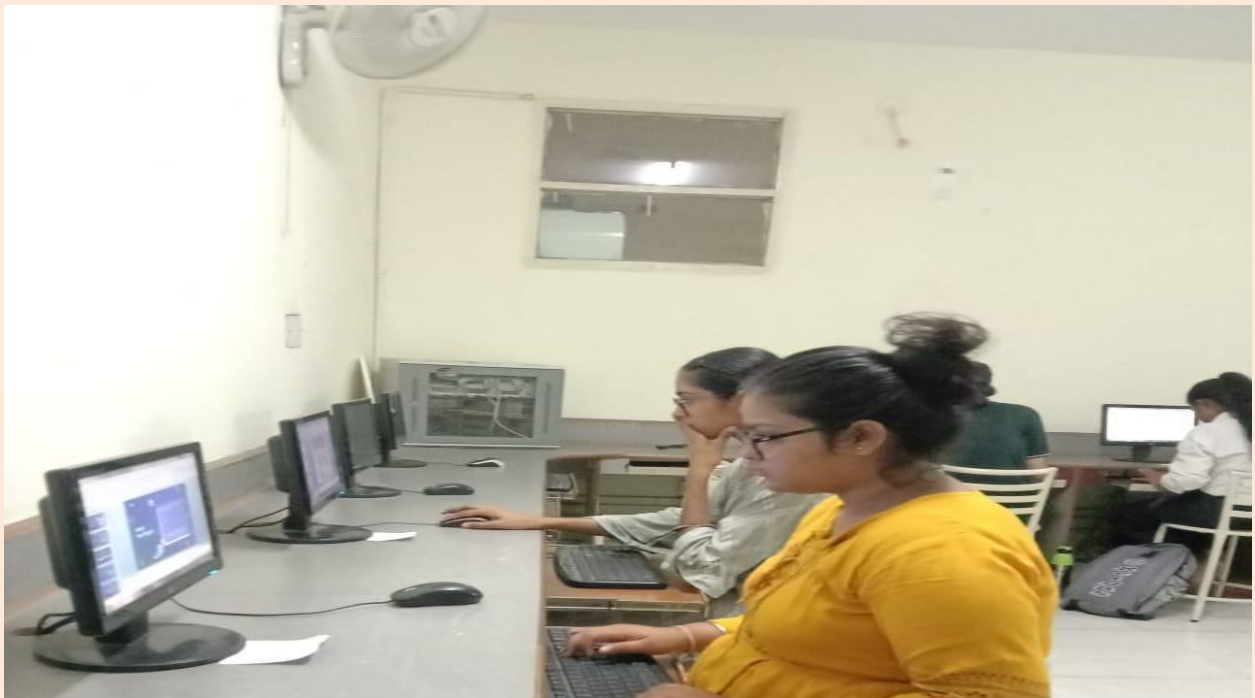
FINE ARTS LAB



SCIENCE LAB



COMPUTER LAB



PARKING AREA - I



CAFETERIA



HERITAGE GLIMPSES



Nurturing Eco System



Store Room & Security Room



Principal *S. S. S. S.*
Kamla Nehru College For Women
Phagwara (Kapurthala)